

# #DIBS BY NEXTILLO

DAILY INFORMATION BULLETIN SERVICE

CONUS MEDULLARIS SYNDROME VS CAUDA  
EQUINA SYNDROME



NEXTILLO.COM



# #DIBSBYNEXTILLO

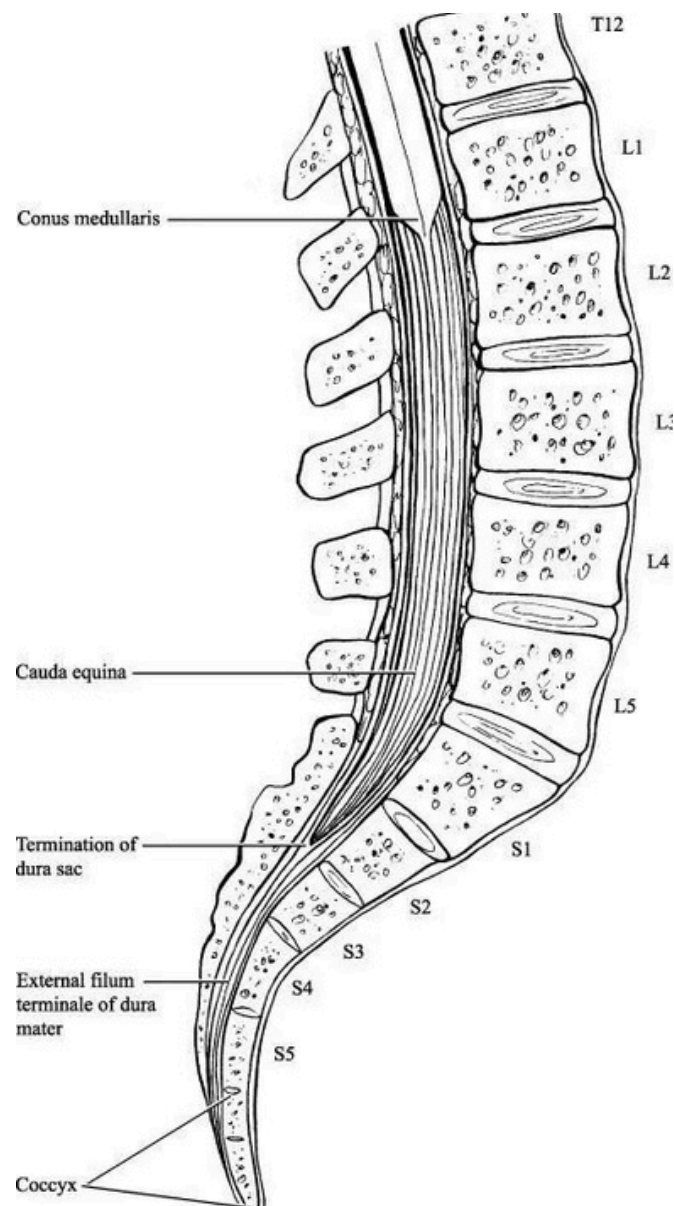
*DAILY INFORMATION BULLETIN SERVICE*

## **CONUS MEDULLARIS SYNDROME VS CAUDA EQUINA SYNDROME**

Understanding the differences between Conus Medullaris Syndrome and Cauda Equina Syndrome is crucial for recognizing distinct neurological conditions affecting the lower spinal cord and nerve roots.



# VISUAL REPRESENTATION





# CONUS MEDULLARIS SYNDROME VS CAUDA EQUINA SYNDROME

## CONUS MEDULLARIS SYNDROME

- **Location and Features** :Affects the conus medullaris, the terminal part of the spinal cord. Symptoms may include bilateral lower extremity weakness, bowel and bladder dysfunction, and saddle anesthesia.
- **Causes and Pathophysiology**: Often caused by lesions or compression at the level of the conus medullaris.
- **Conditions** such as tumors, trauma, or vascular issues can lead to Conus Medullaris Syndrome.
- **Diagnostic Considerations**: Magnetic resonance imaging (MRI) is a key diagnostic tool to visualize the conus medullaris and identify any compressive abnormalities.





# CONUS MEDULLARIS SYNDROME VS CAUDA EQUINA SYNDROME

## CAUDA EQUINA SYNDROME

- **Location and Features:** Affects the nerve roots of the cauda equina, located below the spinal cord termination.
- **Manifestations** include lower back pain, radiculopathy, bowel and bladder dysfunction, and lower extremity weakness.
- **Causes and Pathophysiology:** Often associated with compression of multiple nerve roots due to conditions like lumbar disc herniation, trauma, or spinal tumors.
- Rapid onset may be related to acute disc herniation.
- **Diagnostic Considerations:**
- MRI and lumbar spine imaging are crucial for identifying the compression of nerve roots in the cauda equina region.
- **Conus Medullaris Syndrome** often **requires urgent intervention** due to its impact on the spinal cord's termination. **Cauda Equina Syndrome**, while serious, **is considered more of an emergency**.





# MCQ

***Question: What distinguishes Conus Medullaris Syndrome from Cauda Equina Syndrome?***

- (A). Onset speed***
- (B). Location of nerve root compression***
- (C). Severity of lower back pain***
- (D). Involvement of upper extremities***

***Answer: (B) Location of nerve root compression***

