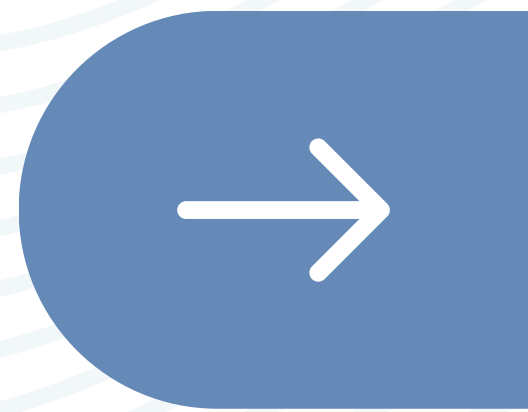


#DIBS BY NEXTILLO

DAILY INFORMATION BULLETIN SERVICE

OPENING INTO MEATUSES





#DIBSBYNEXTILLO

DAILY INFORMATION BULLETIN SERVICE

OPENING INTO MEATUSES

The meatuses are three spaces located beneath each turbinate. The superior meatus drains for the sphenoid and posterior ethmoid sinuses. The middle meatus drains the frontal, anterior ethmoid, and maxillary sinuses. The inferior meatus contains the orifice of the nasolacrimal duct.



VISUAL REPRESENTATION

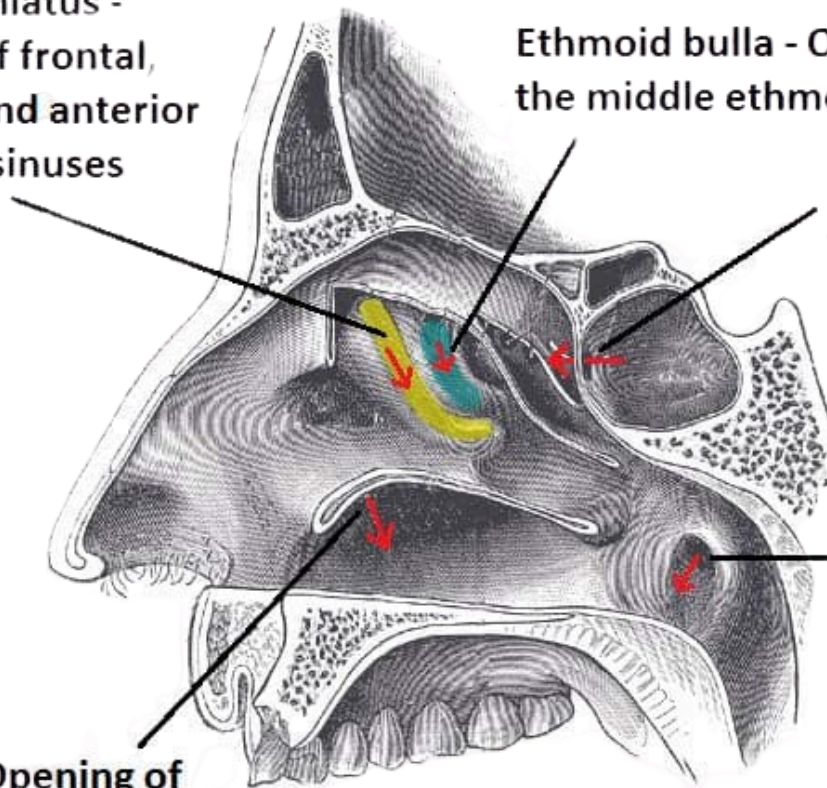
Semilunar hiatus -
Openings of frontal,
maxillary and anterior
ethmoidal sinuses

Ethmoid bulla - Opening of
the middle ethmoid sinus

Opening of
sphenoid sinus

Opening of
nasolacrimal duct

Opening of
eustachian tube



© teachmeanatomy
The #1 Applied Human Anatomy Site on the Web



OPENING INTO MEATUSES

DIVISIONS AND FUNCTIONS

- **Nasal Cavity Overview:**
 - *The nasal cavity serves as a crucial component for both olfaction (sense of smell) and respiration. It collectively contribute to the overall well-being of the respiratory and sensory systems.*
- **Primary Functions: Warming and Humidifying Inspired Air:**
 - *The nasal cavity actively warms and humidifies incoming air, ensuring that it reaches the lungs at an optimal temperature and humidity level.*
- **Pathogen and Particulate Removal:**
 - *An essential function involves the removal of pathogens and particulate matter from the inspired air, acting as a protective barrier for respiratory health.*
- **Olfactory Function:** *The nasal cavity houses the olfactory system, allowing for the sense of smell—a critical aspect of sensory perception.*



OPENING INTO MEATUSES

NASAL CONCHAE AND MEATUSES

- **Nasal Conchae:** Curved bone shelves, referred to as conchae or turbinates, significantly increase the surface area within the nasal cavity. This intricate structure plays a vital role in the nasal functions described below.
- **Inferior Meatus:** This region serves a critical function as the drainage pathway for the nasolacrimal duct, responsible for tear drainage. It is guarded by the valve of Hasner, adding a protective element to this essential process.
- **Middle Meatus:** Comprising the frontal sinus, maxillary sinus, and anterior ethmoidal sinus, the middle meatus forms the osteo-meatal complex, also known as Picadale's circle.
- **Superior Meatus:** Positioned anatomically above, the superior meatus provides drainage for the posterior ethmoidal sinus..



OPENING INTO MEATUSES

OPENINGS AND DRAINAGE

- **Paranasal Sinuses:** Frontal, maxillary, and anterior ethmoidal sinuses drain into the middle meatus, emphasizing the importance of this region in the osteo-meatal complex.
- **Sphenoid Sinus:** The drainage pathway for the sphenoid sinus is situated in the sphenoethmoidal recess,
- Additional Openings:
- **Nasolacrimal Duct (Inferior Meatus):** Drains tears and is guarded by the valve of Hasner, contributing to ocular health.
- **Auditory (Eustachian) Tube (Nasopharynx Level):** Essential for equalizing middle ear pressure,



MCQ

Question: Which nasal meatus is positioned between the inferior concha and the floor of the nasal cavity?

- (A) Inferior Meatus**
- (B) Middle Meatus**
- (C) Superior Meatus**
- (D) Spheno-ethmoidal Meatus**

Answer: (A) Inferior Meatus