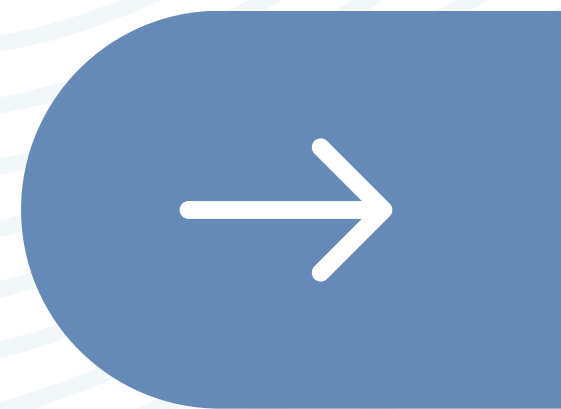




# #DIBS BY NEXTILLO

DAILY INFORMATION BULLETIN SERVICE

**EXTENSOR COMPARTMENT**





# #DIBSBYNEXTILLO

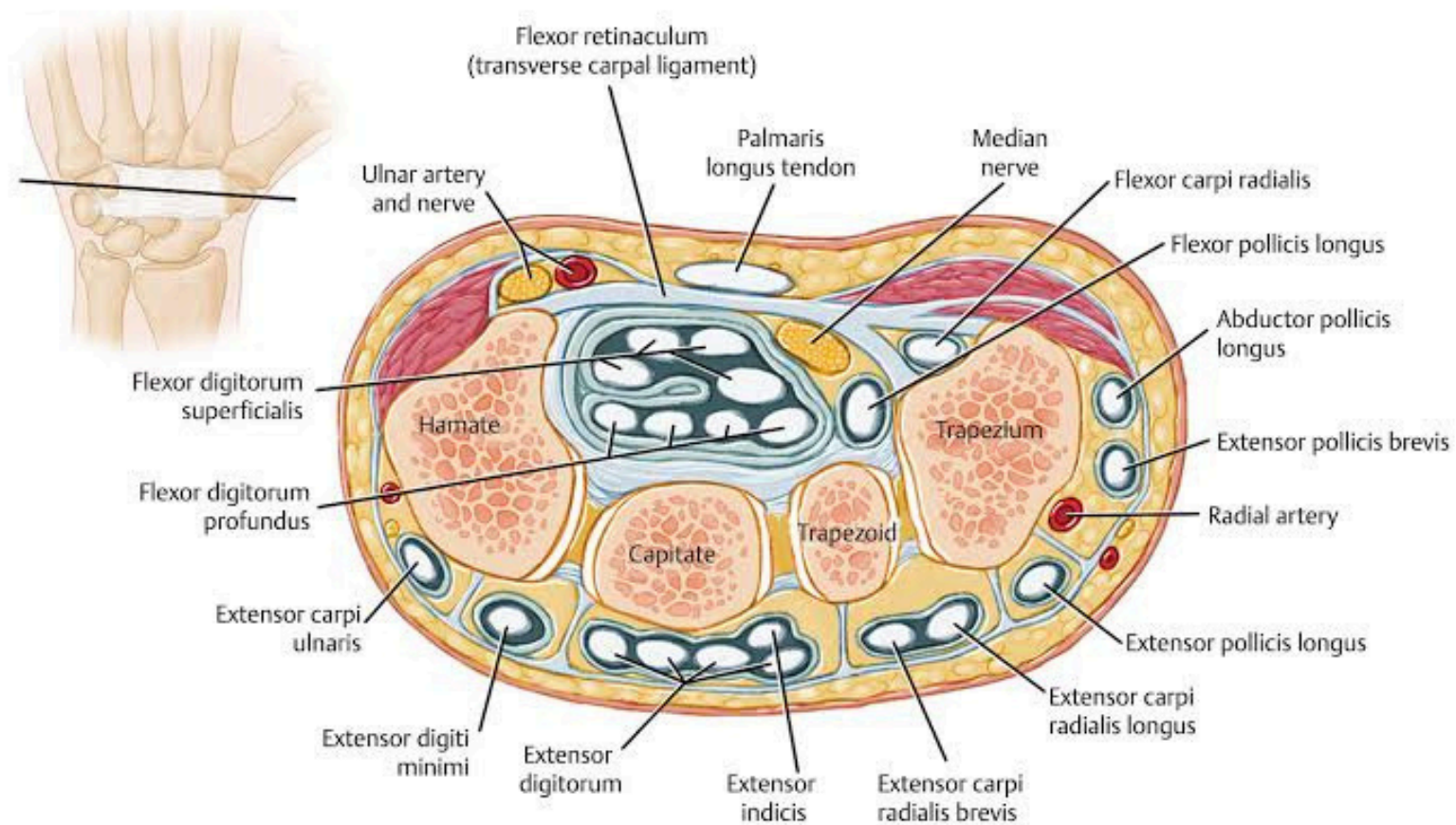
*DAILY INFORMATION BULLETIN SERVICE*

## EXTENSOR COMPARTMENT

The first extensor compartment is comprised of the APL and EPB tendons. The second extensor compartment is comprised of the ECRB and ECRL muscle tendons. The third extensor compartment is comprised of the EPL muscle tendon. The fourth extensor compartment is made up of the EIP and EDC muscle tendons.



# VISUAL REPRESENTATION





# EXTENSOR COMPARTMENT

## ***EXTENSOR RETINACULUM***

- *Fibrous band on dorsal wrist.*
- *Holds extensor tendons in place.*
- *Prevents bowstringing during finger/thumb movement.*
- *Crucial for wrist stability.*
- *Composed of transverse and oblique bands.*



# EXTENSOR COMPARTMENT

## COMPARTMENTS

- *Dorsal Compartment:*
  - - *ECRL, ECRB, EPL, ED, EI pass through.*
  - - *Responsible for wrist and finger extension.*
- *Lateral Compartment:*
  - - *APL, EPB for thumb extension.*
  - - *ECRL, ECRB extend and abduct wrist.*
- *Medial Compartment:*
  - - *EDM for smallest finger extension.*
  - - *ECU extends and adducts the wrist.*





# EXTENSOR COMPARTMENT

## STRUCTURES PASSING THROUGH

- *Abductor Pollicis Longus (APL):*
  - - *In lateral compartment.*
  - - *Abducts thumb at the wrist.*
- *Extensor Pollicis Brevis (EPB):*
  - - *In lateral compartment.*
  - - *Extends thumb at the metacarpophalangeal joint.*
- *Extensor Carpi Radialis Longus (ECRL):*
  - - *In lateral compartment.*
  - - *Extends and abducts the wrist.*
- *Extensor Carpi Radialis Brevis (ECRB):*
  - - *In lateral compartment.*
  - - *Extends and abducts the wrist.*



# MCQ

***Question: Which nerve innervates the deep forearm muscles for precise hand movements?***

- (a) Median Nerve**
- (b) Radial Nerve**
- (c) Ulnar Nerve**
- (d) Anterior Interosseous Nerve**

***Answer: (d) Anterior Interosseous Nerve***