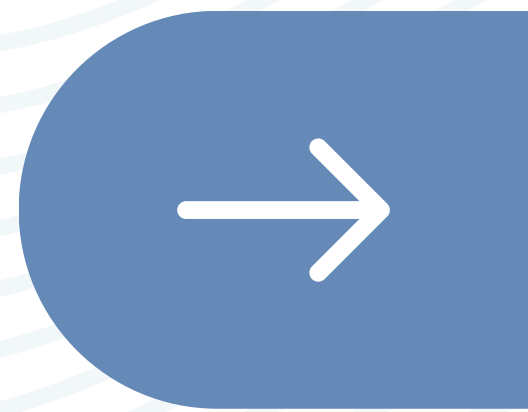


#DIBS BY NEXTILLO

DAILY INFORMATION BULLETIN SERVICE

DUODENAL ATRESIA





#DIBSBYNEXTILLO

DAILY INFORMATION BULLETIN SERVICE

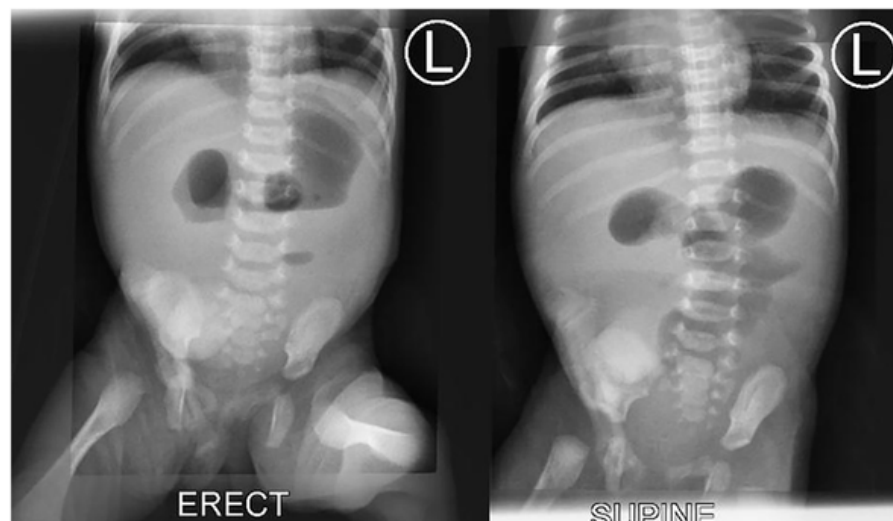
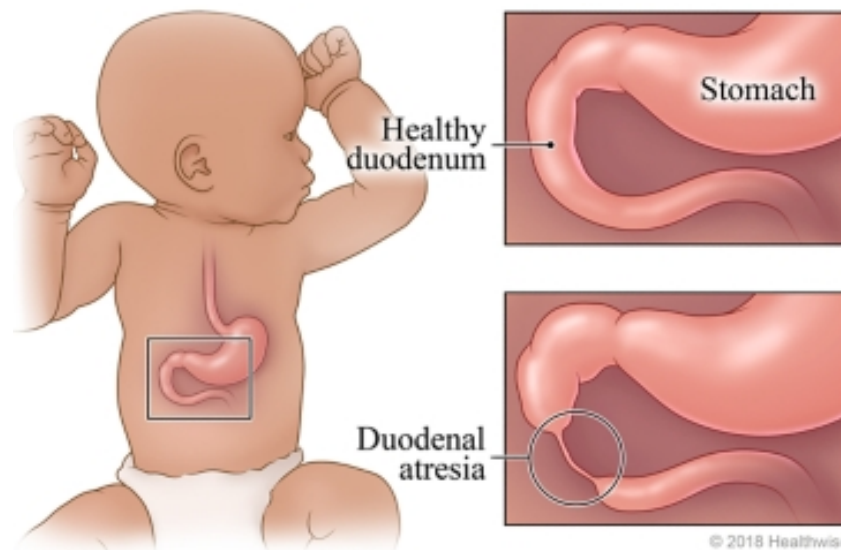
DUODENAL ATRESIA

Duodenal atresia is a congenital condition characterized by the partial or complete obstruction of the duodenum.

Duodenal atresia is mcc of neonatal intestinal obstruction involves the presence of a membrane or complete blockage in the duodenum, impeding the normal flow of food and fluids.



VISUAL REPRESENTATION





DUODENAL ATRESIA

Symptoms:

- **Newborns with duodenal atresia typically present with vomiting, abdominal distension, and the inability to pass meconium within the first 24-48 hours after birth.**

Diagnosis:

- **Prenatal ultrasound may sometimes detect duodenal atresia. After birth, diagnostic tools include imaging studies like X-rays which shows "Double Bubble sign"**

Associated Conditions:

- **It can be associated with other congenital anomalies, such as Down syndrome.**

Treatment:

- **Duodeno-duodenostomy > Duodenojejunostomy**