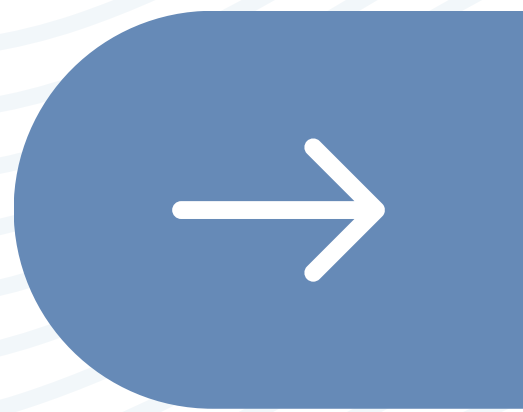


#DIBS BY NEXTILLO

DAILY INFORMATION BULLETIN SERVICE

LN LEVEL IN NECK





#DIBSBYNEXTILLO

DAILY INFORMATION BULLETIN SERVICE

LN LEVEL IN NECK

Cervical lymph nodes are lymph nodes found in the neck. Of the 800 lymph nodes in the human body, 300 are in the neck.

Cervical lymph nodes are subject to a number of different pathological conditions including tumours, infection and inflammation.



IMAGE DESCRIPTION

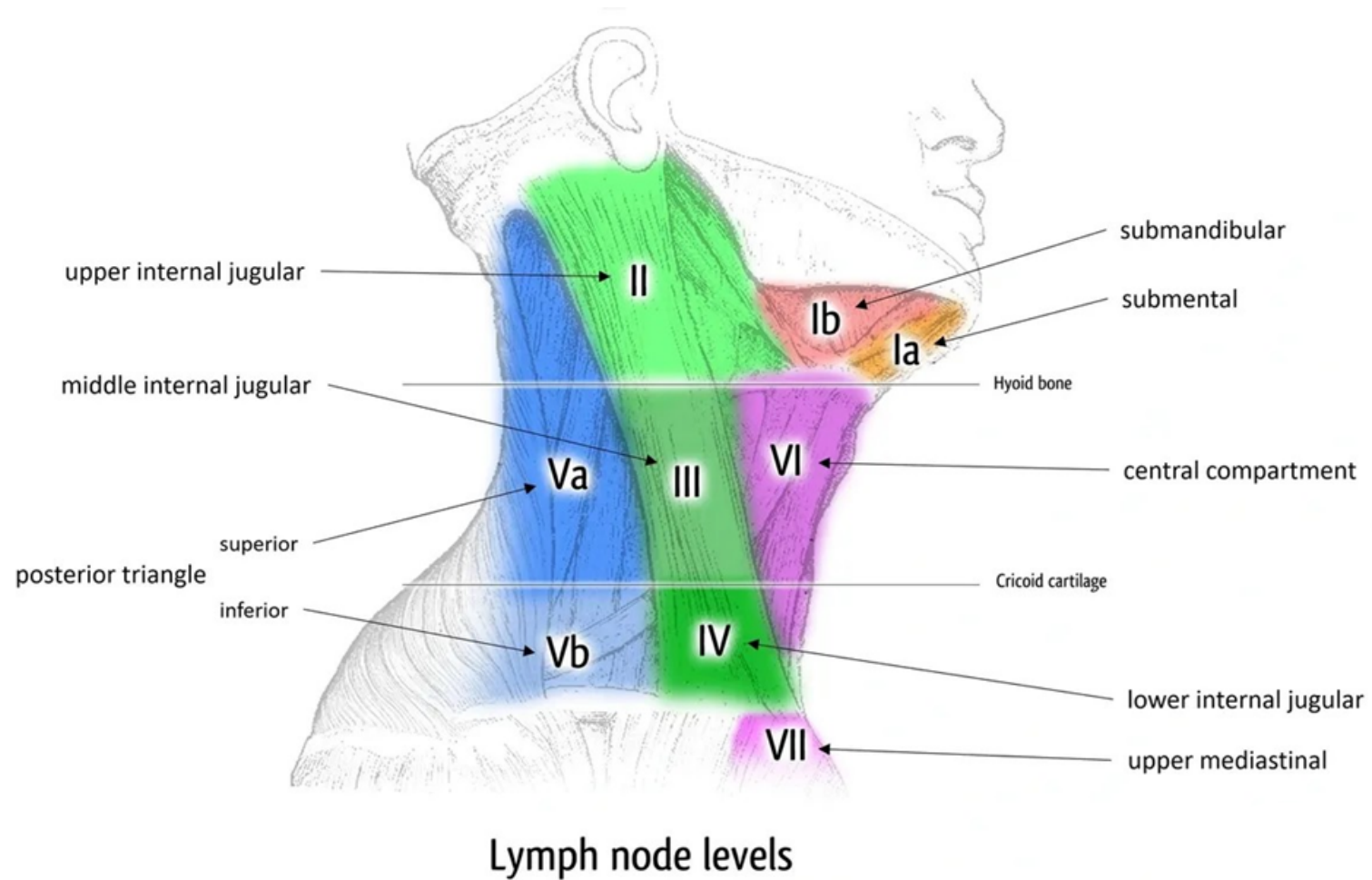
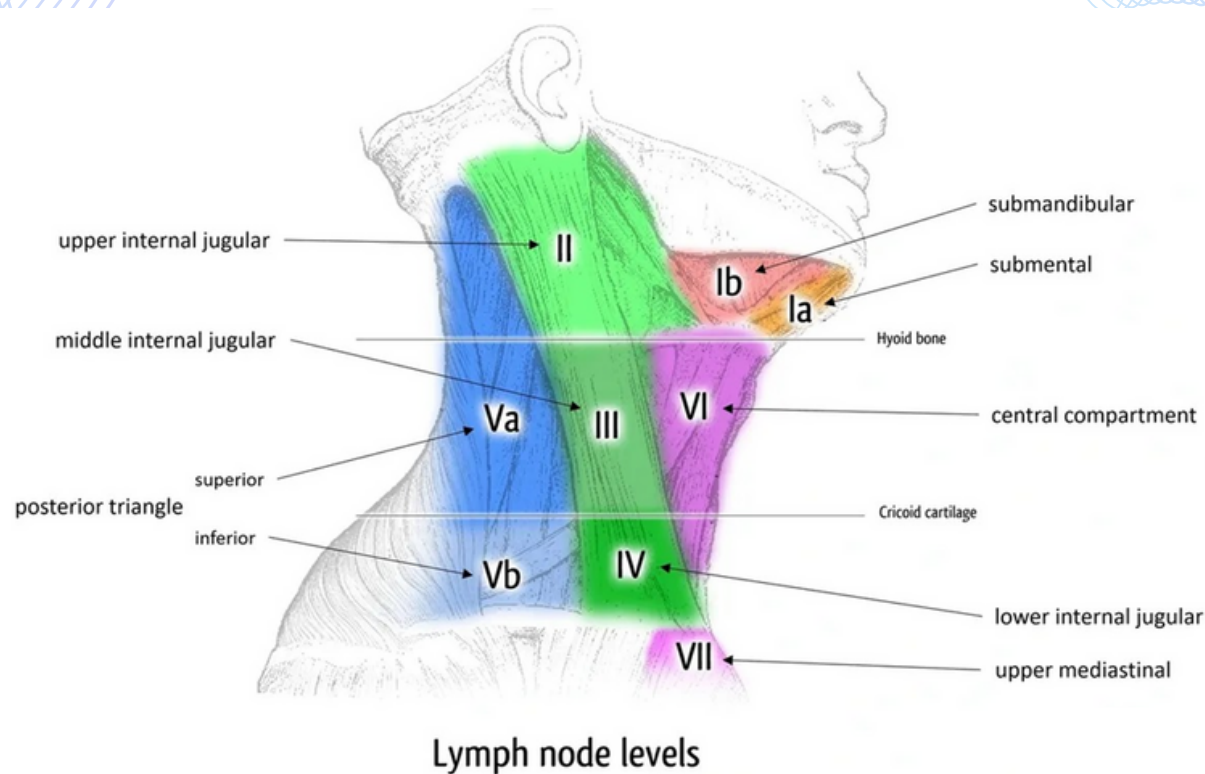


IMAGE DESCRIPTION



- **Illustration of an anatomical diagram of neck lymph nodes levels .**
- **Submandibular Nodes:** Situated beneath the mandible, draining the tongue and submaxillary gland.
- **Level III Nodes:** Along jugular vein, from hyoid bone to cricoid cartilage.
- **Anterior Cervical Nodes:** Positioned anteriorly, draining the larynx and thyroid gland.
- **Level I Nodes:** Along the jugular vein, from the mandible to the hyoid bone.
- **Preauricular Nodes:** Located in front of the ear, draining the scalp and forehead.



SUPERFICIAL CERVICAL NODES

IA - Submental:

Located beneath the chin.

Drain the central part of the lower lip, floor of the mouth, tip of the tongue, and the anterior part of the palate.

IB - Submandibular:

Situated along the lower border of the mandible.

Drain the submandibular gland, oral cavity, and parts of the face.

Upper Jugular and Middle Jugular:

Found along the internal jugular vein.

Drain the scalp, face, and neck above the hyoid bone.

IV - Lower Jugular:

Situated along the lower part of the internal jugular vein.

Drain the lower part of the neck and upper chest.



DEEP CERVICAL NODES

VA and VB -

Posterior Triangle Group:

Located in the posterior triangle of the neck.

Drain the posterior scalp, neck, and upper part of the back.

Pre Tracheal:

Positioned anteriorly around the trachea.

Drain the thyroid gland, larynx, and trachea.

VI - Para Tracheal:

Adjacent to the trachea. Drain the thyroid gland, larynx, and trachea.

VII - (Controversial) - Mediastinum:

Some debate exists regarding whether nodes in the mediastinum should be considered part of cervical nodes.

Potentially involved in drainage from the lower neck and upper chest.



FUNCTIONAL CONSIDERATIONS

Communication Between Levels:

Lymphatic vessels connect the various levels, allowing for fluid and immune cell movement.

Clinical Significance:

Helps in staging cancers and planning surgical interventions.

Imaging and Diagnosis:

Radiological techniques, such as CT and MRI, can help in identifying enlarged nodes.

Surgical Implications:

Specific levels are involved when performing lymph node dissections or neck dissections for cancer treatment.



LN LEVEL IN NECK

Question:

Which of the following statements is accurate regarding neck lymph nodes?

- 1) Level II involves nodes along the jugular vein from the skull base to the hyoid bone.**
- 2) Level V includes nodes in the submandibular region.**
- 3) Level III comprises nodes along the jugular vein from the hyoid bone to the cricoid cartilage.**
- 4) Level IV involves nodes in the posterior triangle extending to the supraclavicular area.**
- 5) Level I encompasses nodes along the jugular vein from the cricoid cartilage to the clavicle.**

- A) Only
- B) A and B
- C) C and D
- D) D and E
- E) All of the above

Answer: A)