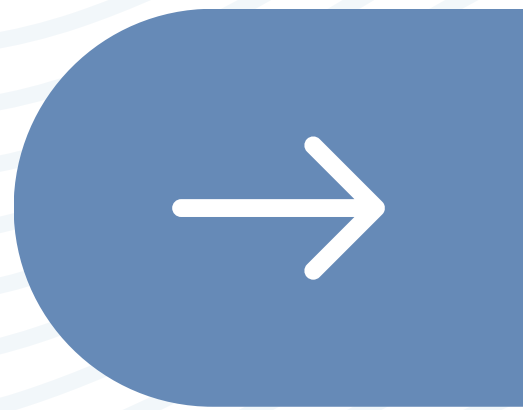


#DIBS BY NEXTILLO

DAILY INFORMATION BULLETIN SERVICE

DIAPHRAGMATIC OPENINGS





#DIBSBYNEXTILLO

DAILY INFORMATION BULLETIN SERVICE

OPENINGS IN THE DIAPHRAGM

As it forms a solid barrier between the abdominal and thoracic cavities, three large openings are needed in the diaphragm to allow the esophagus, aorta, vena cava, and associated nerves to pass through.



DIAPHRAGMATIC OPENINGS

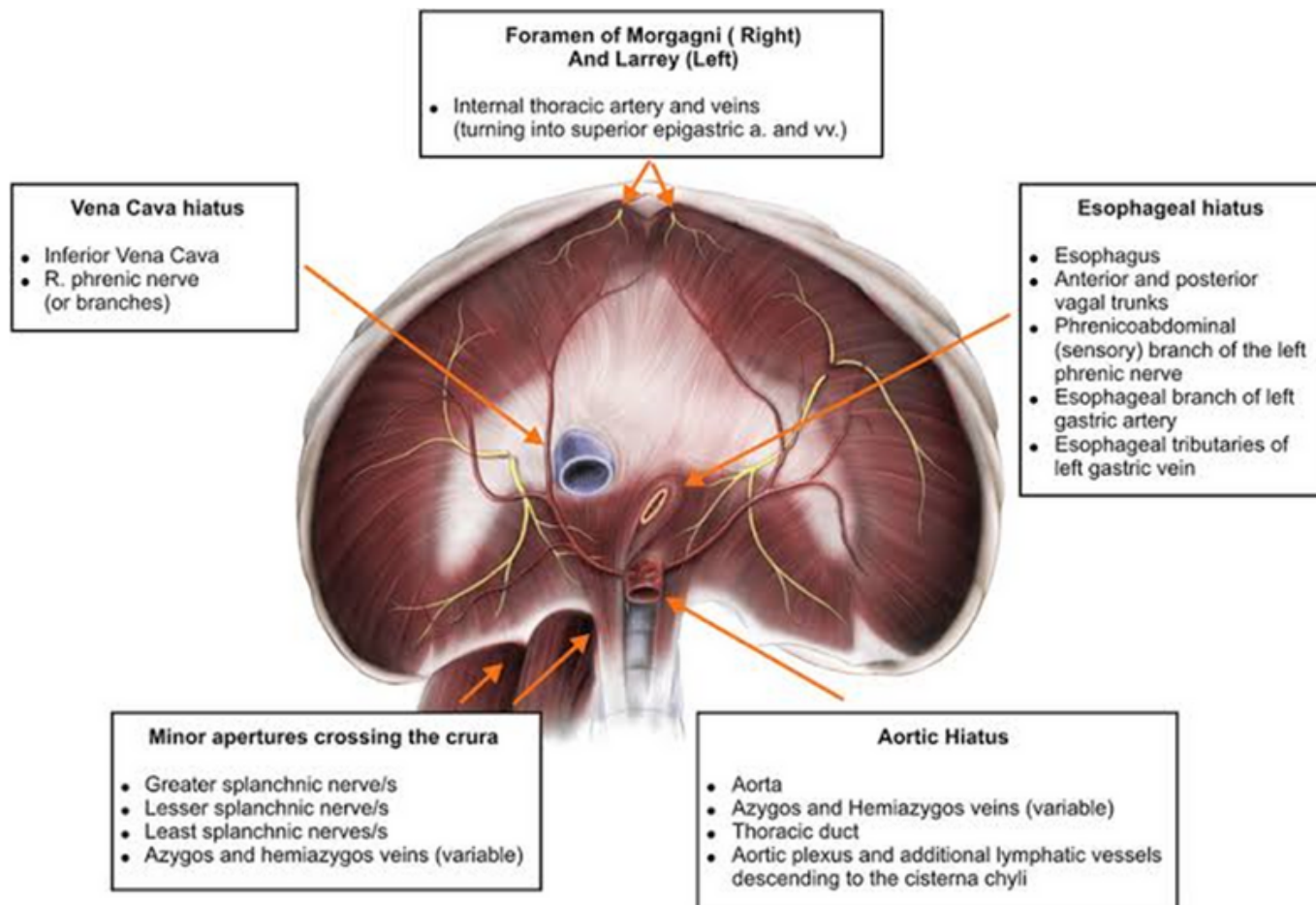
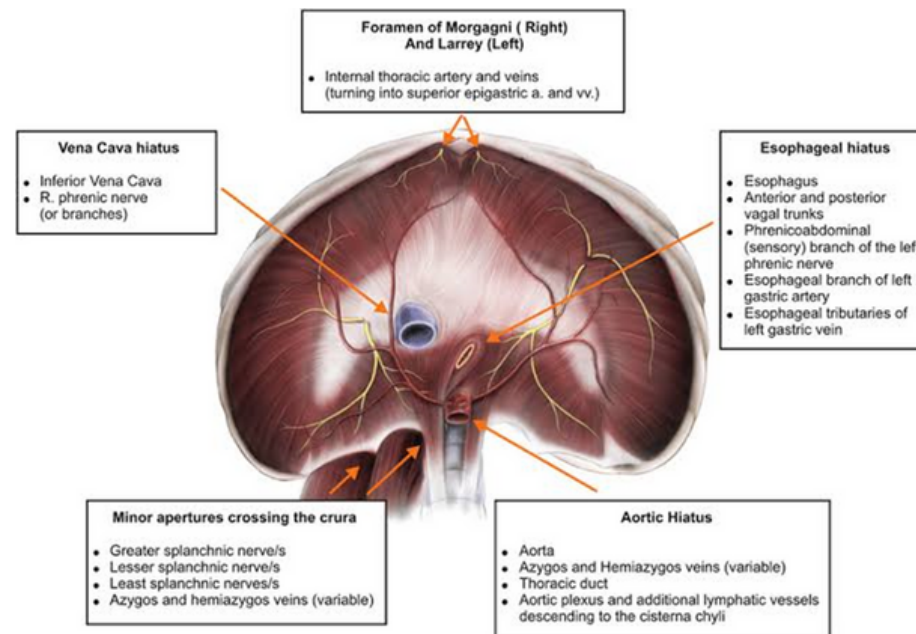




IMAGE DESCRIPTION



- An anatomical illustration showcasing diaphragmatic openings: Q8, T10, T12, and crus. Various structures pass through, including the inferior vena cava, phrenic and vagus nerves, aorta, thoracic duct, and veins.
- The diaphragmatic Q8 opening facilitates central abdominal connection and support.
- Phrenic nerves traverse T10, ensuring respiratory signals and motor control.
- T12, the muscular part opening, aids in breathing and posture.
- Crus of the diaphragm at various levels accommodates essential structures.
- Azygous vein occasionally passes through the right crus, adding variability.



LEVEL OF OPENING

- **Q8:** Located centrally in the diaphragm.
- **T10:** Positioned in the central tendon of the diaphragm.
- **T12:** Extends into the muscular part of the diaphragm.
- **Crus:** Found in the crus of the diaphragm.



STRUCTURES PASSING THROUGH

- **Inferior Vena Cava:** *Transverses the diaphragm.*
- **Phrenic Nerves:** *Right phrenic nerve passes through.*
- **Vagus Nerves:** *Right and left vagus nerves traverse the diaphragm.*
- **Aorta:** *Major vessel passing through the diaphragm.*
- **Thoracic Duct:** *Passes through the diaphragm.*



MINOR OPENINGS

- **Space of Larry:** Located in the Costo-Xiphoid gap.
- **Medial Arcuate Ligament:** Accommodates the sympathetic chain.
- **Lateral Arcuate Ligament:** Allows passage for subcostal nerves and vessels.
- **Splanchnic Nerves:** Pass through the right and left crus.
- **Azygous Vein:** May traverse through the right crus.



MCQ

Question:

Which structure may occasionally pass through the right crus of the diaphragm?

- A) *Vagus Nerve*
- B) *Inferior Vena Cava*
- C) *Aorta*
- D) *Thoracic Duct*

Answer: B) Inferior Vena Cava