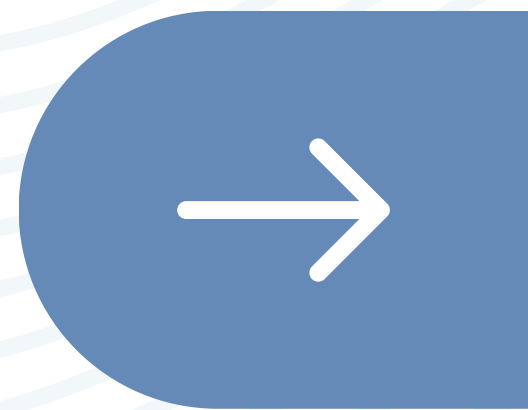


#DIBS BY NEXTILLO

DAILY INFORMATION BULLETIN SERVICE

COMPRESSIVE NEUROPATHY





#DIBSBYNEXTILLO

DAILY INFORMATION BULLETIN SERVICE

COMPRESSIVE NEUROPATHY

Compressive neuropathy is one of the most fascinating yet most complex aspects of Hand Surgery. It is also quite often the most rewarding surgery in terms of clinical outcomes with some exceptions. Compressive or entrapment neuropathy results from compression on a nerve at some point over its course in the upper limb.



CUBITAL TUNNEL SYNDROME

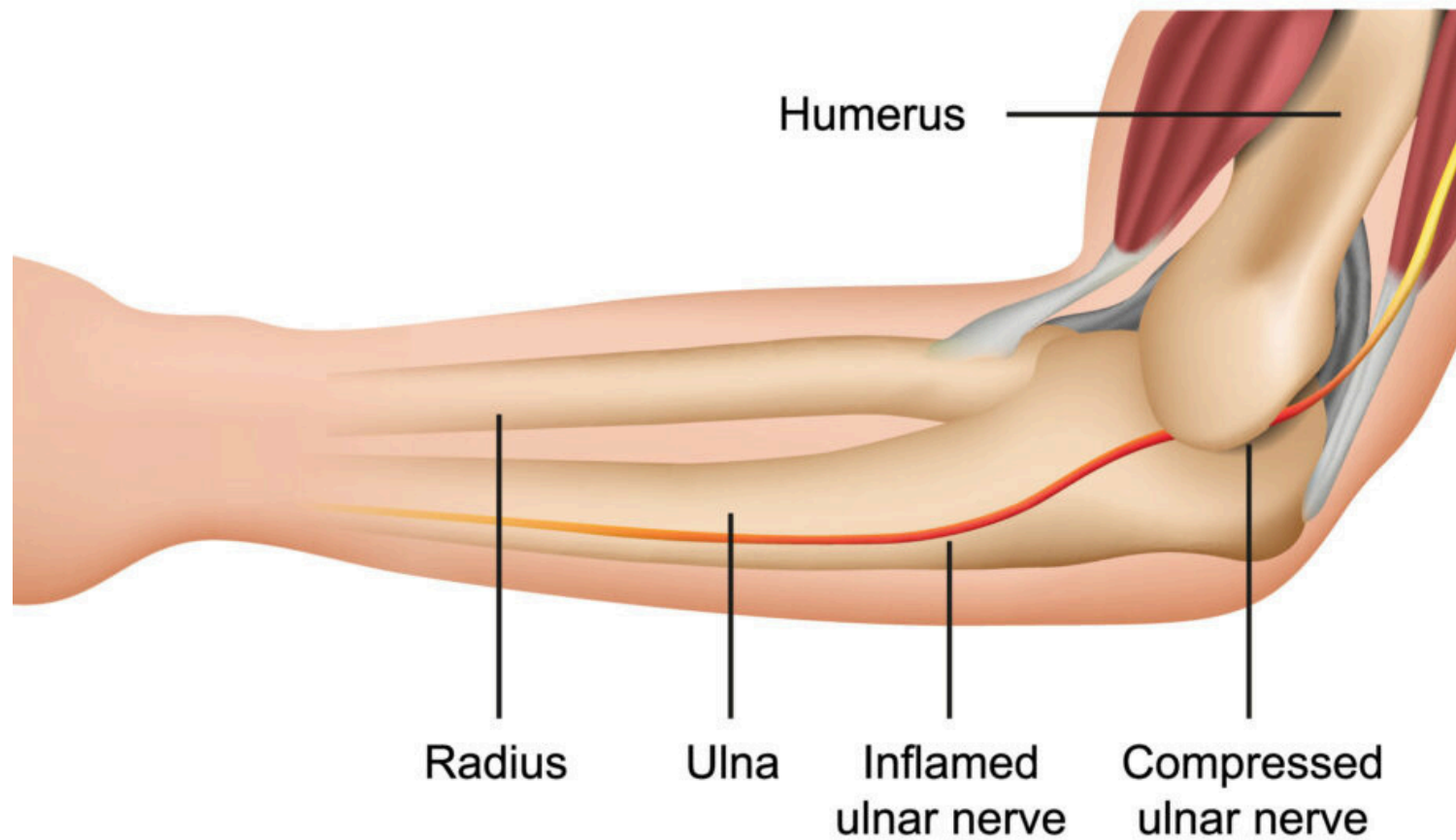
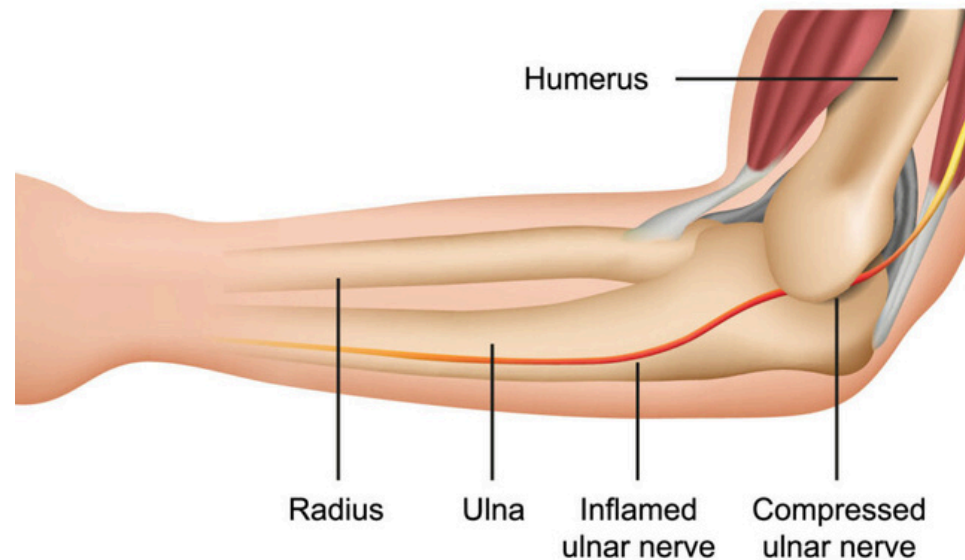




IMAGE DESCRIPTION



- *This illustration showing Cubital tunnel syndrome.*
- *Compression neuropathy occurs when nerves are squeezed, leading to damage.*
- *Common causes include repetitive motion, injury, or prolonged pressure*
- *Symptoms may include pain, numbness, tingling, and weakness in affected areas.*
- *Carpal tunnel syndrome is a prevalent compression neuropathy affecting the wrist.*
- *Treatment may involve rest, splints, medications, or in severe cases, surgery.*



RADIAL TUNNEL SYNDROME

- **Nerve Involved:** *Posterior Interosseous nerve (proximal forearm compression).*
- **Location:** *Compression within the radial tunnel, Arcade of Frohse.*
- **Presentation:** *Symptoms related to the posterior forearm and radial nerve distribution.*
- **Clinical Insight:** *Distinguish from lateral epicondylitis for appropriate management.*
- **Treatment:** *Conservative measures or surgical intervention based on severity.*



TARSAL TUNNEL SYNDROME

- **Nerve Involved:** *Posterior tibial nerve.*
- **Location:** *Compression within the tarsal tunnel behind the medial malleolus.*
- **Presentation:** *Sensory disturbances, pain, and weakness in the foot.*
- **Clinical Insight:** *Consider underlying conditions contributing to nerve compression.*
- **Intervention:** *Conservative measures, orthotics, or surgical release depending on severity.*



CARPAL TUNNEL SYNDROME

- ***Nerve Involved:*** Median nerve (compression at the wrist).
- ***Location:*** Compression at the carpal tunnel in the wrist.
- ***Presentation:*** Numbness, tingling, and weakness in the hand.
- ***Clinical Insight:*** Common in repetitive hand use; assess for occupational factors.
- ***Management:*** Conservative measures, wrist splints, or surgical release if needed.



MCQ

Question:

Which nerve is primarily affected in Pronator Teres Syndrome?

- A) *Ulnar nerve*
- B) *Radial nerve*
- C) *Median nerve*
- D) *Axillary nerve*

Answer: C) Median nerve