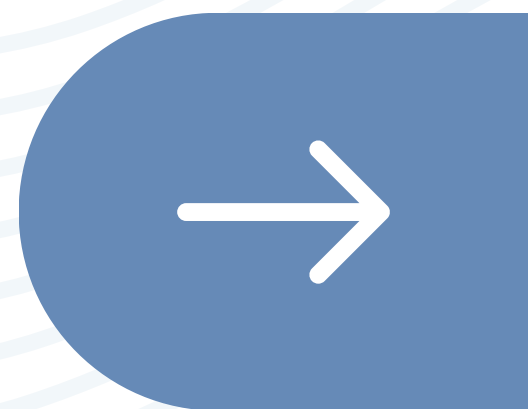


#DIBS BY NEXTILLO

DAILY INFORMATION BULLETIN SERVICE

RENAL CELL CARCINOMA



NEXTILLO.COM



#DIBSBYNEXTILLO

DAILY INFORMATION BULLETIN SERVICE

RENAL CELL CARCINOMA

Renal cell carcinoma is the *most common type of kidney cancer*, originating in the cells lining the small tubes (tubules) of the kidney.

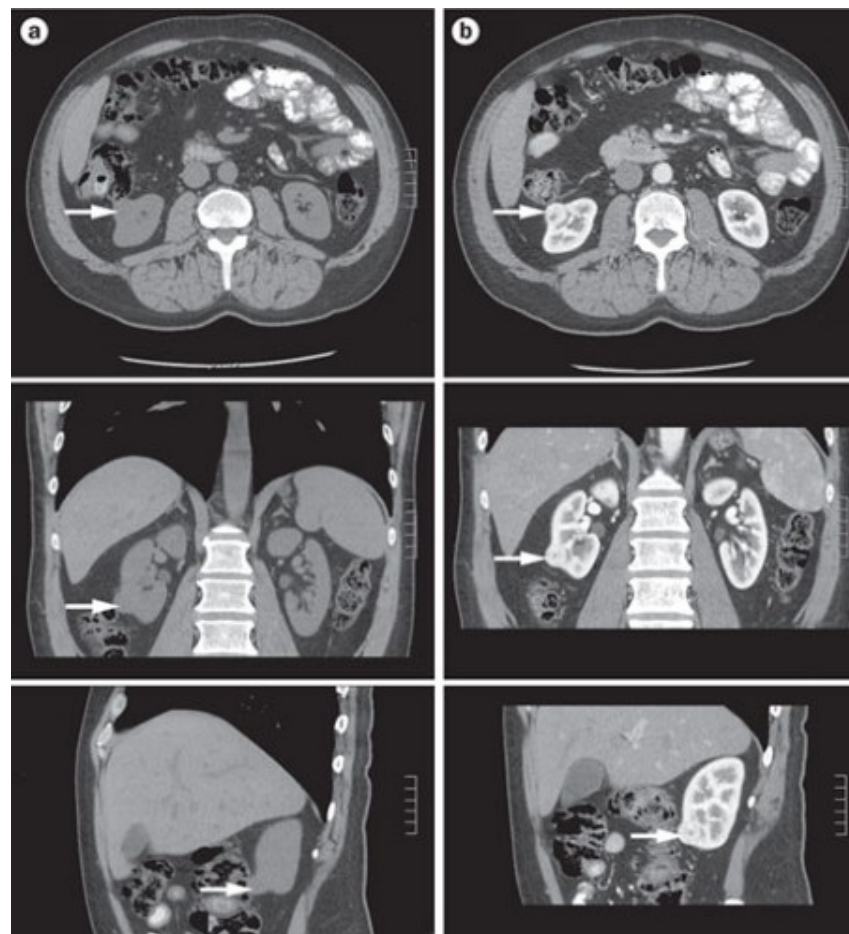
Subtypes:

1. *Clear Cell RCC*: Most common subtype, characterized by clear cells with a rich network of blood vessels.
2. *Papillary RCC*: Cells form small finger-like projections.
3. *Chromophobe RCC*: Distinctive large, pale cells with a reticular cytoplasm.





CLINICAL IMPRESSION



CT showing Central Stellate scar



RISK FACTORS

- **Smoking:** *Cigarette smoking is a major risk factor.*
- **Obesity:** *Higher body mass index (BMI) is associated with an increased risk.*
- **Hypertension:** *Chronic high blood pressure is a risk factor.*
- **Genetic Factors:** *Hereditary syndromes like von Hippel-Lindau (VHL) disease.*



CLINICAL FEATURES

- **Hematuria:** *Blood in the urine is a common presenting symptom.*
- **Flank Pain:** *Dull, persistent pain in the side or lower back.*
- **Palpable Abdominal Mass:** *A mass may be felt during a physical examination.*





DIAGNOSIS

- **Imaging Studies:** *CT scan or MRI for visualization of the tumor and its characteristics.*
- **Biopsy:** *Sometimes performed for confirmation, especially in complex cases.*
- **Blood Tests:** *Elevated levels of certain markers like erythropoietin or parathyroid hormone may be observed.*





MANAGEMENT

Surgery: Radical or partial nephrectomy, depending on the tumor size and location.

Targeted Therapy: Tyrosine kinase inhibitors or immune checkpoint inhibitors for advanced cases.

Immunotherapy: Stimulates the body's immune system to fight cancer cells.

Radiation Therapy: Sometimes used for palliation or in specific cases.





RENAL CELL CARCINOMA

Question:

A 55-year-old male presents with hematuria, flank pain, and a palpable abdominal mass. Imaging reveals a well-vascularized tumor with a clear cell appearance. What is the most likely subtype of renal cell carcinoma (RCC) in this patient?

- A) Papillary RCC
- B) Chromophobe RCC
- C) Clear cell RCC
- D) Collecting duct RCC

Ans: C