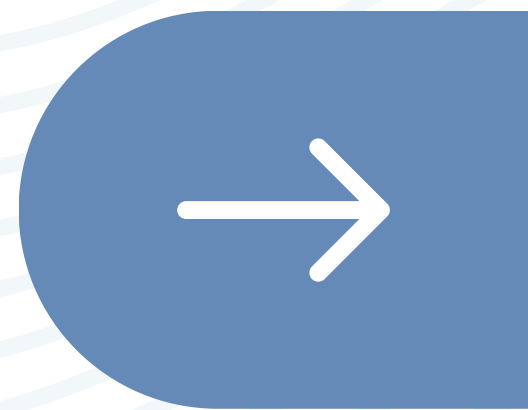


#DIBS BY NEXTILLO

DAILY INFORMATION BULLETIN SERVICE

RENAL ONCOCYTOMA





#DIBSBYNEXTILLO

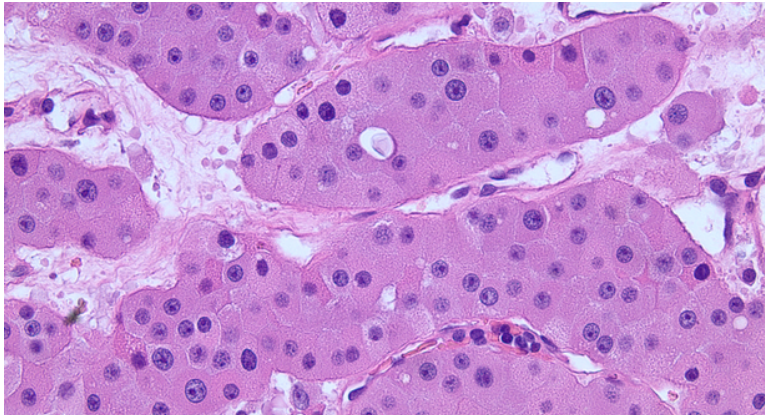
DAILY INFORMATION BULLETIN SERVICE

RENAL ONCOCYTOMA

Renal oncocytoma is a benign renal tumor composed of oncocytes, large epithelial cells with abundant eosinophilic, granular cytoplasm. These tumors are typically well-circumscribed and solitary.



CLINICAL IMPRESSION



Histopathology showing uniform round or polygonal cells that are intensely eosinophilic with granular cytoplasm and with uniform small, round, central nuclei.

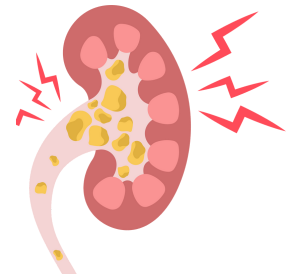


CT showing Central Stellate scar



EPIDEMIOLOGY

- *Renal oncocytomas are relatively uncommon, representing a small percentage of renal tumors.*



- *They are more frequently diagnosed in older adults, with a slight male predominance.*



CLINICAL FEATURES

- *Often asymptomatic and incidentally discovered on imaging studies.*
- *When symptoms occur, they may include flank pain or a palpable mass.*

Histopathology

- *On microscopy, oncocytomas display sheets of large, uniform cells with a granular eosinophilic cytoplasm.*
- *Central stellate scar, consisting of fibrous tissue, is a characteristic feature.*



DIFFERENTIAL DIAGNOSIS

- *Oncocytomas can be challenging to differentiate from renal cell carcinoma (RCC) and other renal tumors.*
- *Biopsy or surgical excision may be necessary for definitive diagnosis.*

Imaging Studies

- *CT Scan: Oncocytomas typically appear as well-circumscribed, homogenous tumors with a central scar.*
- *MRI: Can be used for further characterization, especially in cases where CT findings are inconclusive.*



MANAGEMENT

- *Surgical resection is the primary treatment.*
- *Nephron-sparing procedures (partial nephrectomy) are often feasible due to the benign nature of oncocytomas.*
- *Postoperative follow-up is generally favorable, with a low risk of recurrence.*

Complications

- *Oncocytomas are typically benign, and complications are rare.*
- *Misdiagnosis or inappropriate treatment may lead to unnecessary procedures.*



RENAL ONCOCYTOMA

Question:

Which of the following features is characteristic of renal oncocytoma on histopathology?

- A) Small, uniform cells with clear cytoplasm*
- B) Large, eosinophilic cells with a granular cytoplasm*
- C) Papillary architecture with psammoma bodies*
- D) Spindle cells forming a whorled pattern*

Ans B) Large, eosinophilic cells with a granular cytoplasm