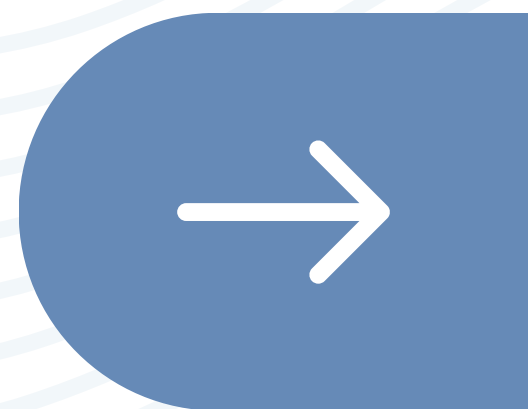


# #DIBS BY NEXTILLO

DAILY INFORMATION BULLETIN SERVICE

**SIGMOID VOVULUS**





# #DIBSBYNEXTILLO

DAILY INFORMATION BULLETIN SERVICE

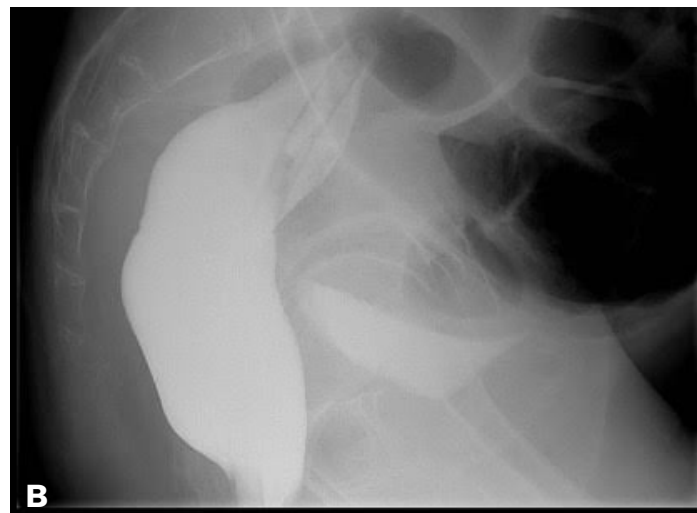
## SIGMOID VOLVULUS

*Sigmoid volvulus is a **gastrointestinal emergency** characterized by the **twisting or rotation** of the **sigmoid colon** around its own mesentery.*

*This rotation can **lead to a closed-loop obstruction** and **compromise blood flow** to the affected segment.*



# RADIOLOGICAL SIGNS



***A) Coffee bean sign***

***B) Bird beak sign***



# CLINICAL FEATURES

## ***Abdominal Pain and Distention:***

***Gradual onset of abdominal pain and distention, often in the left lower quadrant.***

## ***Constipation and Obstipation:***

***Patients may report constipation, and obstipation (inability to pass gas or stool) can occur with a complete obstruction.***

## ***Nausea and Vomiting:***

***Nausea and vomiting may be present, reflecting the obstructive nature of the condition.***

## ***Abdominal Tenderness:***

***Tenderness over the sigmoid colon may be elicited on physical examination.***





# DIAGNOSIS

## 1. Abdominal X-ray:

- ***“Coffee bean” or “sigmoid-shaped” appearance on plain abdominal X-ray.***
- ***Evidence of a distended sigmoid loop.***

## 2. CT Scan:

- ***Can provide a more detailed assessment of the volvulus and its complications.***

## 3. Barium Enema:

- ***Bird beak sign, ace of spade sign.***







# MANAGEMENT

## ***1. Nonoperative Decompression:***

- ***A flexible tube is inserted to untwist the volvulus.***
- ***A rectal tube may be used for decompression.***

## ***2. Surgical Intervention:***

- ***Elective or emergency surgery is often required, especially if nonoperative measures fail or if there are signs of bowel ischemia.***
- ***Surgical options include detorsion, sigmoidectomy, and colostomy.***





# SIGMOID VOLVULUS

## **Question :**

***A 65-year-old patient presents with abdominal pain, distention, and obstipation. Abdominal X-ray reveals a “coffee bean” appearance. What is the most likely diagnosis?***

- A) Appendicitis
- B) Sigmoid Volvulus
- C) Diverticulitis
- D) Crohn's Disease

***Answer: B) Sigmoid Volvulus***

